

IVECO

Drive the road of change



S-WAY

ACCESSORIES CATALOGUE

Overseas Model Shown



IVECO

IVECO S-WAY

Get used to your new S-WAY of life

IVECO S-WAY provides a complete transport solution designed to enhance the driver's life on board and enable the owners to operate efficiently, profitably and sustainably.

Set to become a favourite of drivers, and their home away from home, the IVECO S-WAY cab raises the working and living experience, providing a spacious and well laid out environment rich in comfort features and advanced functionalities.

IVECO S-WAY delivers outstanding fuel efficiency and sustainability, together with low Total Cost of Ownership, with its advanced technologies and innovative services.

A 100% connected truck, IVECO S-WAY ushers in a new era of proactive and predictive support.

In line with this new way of working and driving, IVECO offers a new generation of specifically developed accessories, that customise and maximise your personal experience with your NEW IVECO S-WAY.

Depending on your personality, you can build your unique IVECO S-WAY by choosing to enhance its style with a wide range of high-quality chromed details, with the new LED backlit logo.

Active and passive additional safety and security systems help you to better protect your precious vehicle and its load, while hi-tech accessories really bring the future on board.

Last but not least, you can decide the level of comfort of your Brand New IVECO S-WAY through a comprehensive series of accessories, as for example an enhanced entertainment system, developed to make your life on board as productive and comfortable as possible.

With IVECO S-WAY, drivers and owners will DRIVE THE NEW WAY.

Drive in style

Every single detail has been carefully designed to highlight its predominant character maximising aerodynamic performances.

High-quality materials and accurate testing allow easy mounting operations.





Mirror covers

Matt chromed grid

Matt chromed styling kit

Mirror covers

Lightweight ABS plastic covers protecting the mirrors and enhancing the design. The kit includes 2 pieces (left and right mirror covers).

PN	Description
500051761	Chromed mirror covers
500049916	Primed mirror covers

Matt chromed grid

Material: Chromed Lightweight ABS add-on covers.
The kit contains:

- 5 covers

PN	Description
500051764	Matt chromed grid

Matt chromed styling kit

Material: Stainless steel.
The kit contains:

- 2 bumper inlay stickers
- 2 under window stickers
- 2 side skirt inlay stickers

PN	Description
500051763	Matt chromed styling kit

Inox laser grid

PN	Description
500052015	Satin stainless steel grille



Tuning styling kit

Material: Stainless steel high gloss polished.
The kit contains:

- 2 door handles
- 5 grid inlays
- 2 mirror inlays

PN	Description
500049918	Tuning kit



Wheel hub cover with logo

Designed to give maximum protection to your wheel hub emphasising style thanks to IVECO logo, diameter 22.5" - 10 holes. Not compatible with Tyre Pressure Monitoring System.

PN	Description
500025725	1 front stainless steel wheel hub cover
500025726	1 rear steel wheel hub cover
93162440	2 front chromed wheel hub covers
93162678	2 rear chromed wheel hub covers

Drive in style

Wheel hub covers

- Designed to give maximum protection to your wheel hub
- Diameter 22.5" - 10 holes

PN	Description
500051782	1 stainless steel front hub cover
500051783	1 stainless steel rear hub cover



Wheel nut covers

- Designed to give maximum protection to your wheel nuts
- Diameter 32" - pack of 10 pieces

PN	Description
500051794	Chromed steel
93162600	Steel with embossed IVECO
2994362	Plastic chromed 32"
500050281	Plastic chromed
500050997	Chromed steel with blue sky details
500050252	Plastic alpine white
500050479	Plastic white
500050258	Plastic black

Wheel trims

The wheel trims bring style and smartness to movement, further reducing fuel consumption. Available in polished stainless steel or plastic chrome, with fixing brackets and central cup with IVECO logo. Supplied in 2-piece kits.

PN	Description
2994354	Front steel wheel trims - 22.5" (10 holes)
2994355	Rear steel wheel trims - 22.5" (10 holes)
500025732	Front plastic wheel cup - 22.5" (10 holes)
500025733	Rear plastic wheel cup - 22.5" (10 holes)





Chromed logo & trims

For rear of cabin.

Material: Stainless steel.

The kit contains:

- 1 IVECO logo
- 4 Trims

PN	Description
500051780	Chromed logo & trims





Drive in style

Decals

The stylish decals, guaranteed waterproof and UV-resistant, enhance the character of the vehicle.



Edge

PN	Description
500049934	Kit EDGE variant 1 Silver & Titanium
500049935	Kit EDGE variant 2 Silver & Gold



Race

PN	Description
500049937	Kit RACE variant 1 Red & Silver
500049938	Kit RACE variant 2 Titanium & Gold



IVECO side cabin sign

Set of 2 pieces of side cabin sign, silk-screen printing UV-resistant.

PN	Description
500049919	IVECO side cabin sign



Band

PN	Description
500049936	Kit BAND variant 1 Silver & Gold

Distinctive visibility

A set of accessories designed to provide illumination on the roads or in the working area giving personality and guaranteeing safety. Electronic horns and reflective tools allow your vehicle to be always recognisable.

Backlit IVECO logo



Backlit IVECO logo

The new LED backlit cover designed for the shape of the NEW S-WAY roof enhances vehicle identity with the customised logo.

The kit contains:

- LED stripes
- Lightweight ABS cover
- Sticker with IVECO logo
- Stainless steel matt chromed sticker

Opt. 79454: predisposition for the LED bar and the fleet sign retro-lighting with an in-cab controller.

PN	Description
500051765	Backlit fleet sign

Illuminated grille optic fibre grid

The Illuminated Grille kit will enliven your S-WAY with a different colour and shade every day: use the mobile App to choose your preferred colour from among the millions of shades available in the App. This lets the vehicle take on an aggressive, modern look. Available in either Chromed or Matt Black.

PN	Description
500052016	Chromed
500052040	Matt Black



S-WAY Chromed Optic Grid

Illuminated logo

PN	Description
500051672	Illuminated logo



Roofbar

Specifically designed to emphasise the design of the front of the vehicle and give it a rugged look.

Superior roofbars: Diameter 60mm, with support for 4 additional lights.

Opt. 79454: predisposition for the LED lights with an incab controller

PN	Description
500051790	Electropolished stainless steel superior roofbar*
500049940	Stainless steel black superior roofbar*



*Lights not included with roofbar.

LED light

PN	Description
500050661	Full LED additional light, 700lm, with 7" diameter, black cover/chromed surround
500050662	Full LED additional light, 700lm, with 9" diameter, black cover/chromed surround
500050663	Full LED additional light, 1200lm, with 9" diameter, black cover/chromed surround
500050664	Full LED additional light, 1200lm, with 9" diameter, chromed cover/chromed surround
500051877	New Full LED squared additional light, 140 x 67mm, 2000lm, black cover



LED working lamps

The LED has a reduced energy consumption, (-50% V. halogen lamps).

PN	Description
500051722	LED 10/30V 1000lm flood metal 0.5m. Open end 110 x 110 x 40mm
500051723	LED 10/30V 1800lm flood plastic 0.5m. Open 105 x 105 x 27mm. 12W
500051724	LED 10/30V 2000lm flood plastic 0.5m. Open 110 x 94 x 68mm. 10W

LED working lamp

PN	Description
500051560	LED Working Lamp, 600lm, 12/24V



LED beacons

IVECO accessories LED beacons guarantee optimum lighting at all times (ECE R65 R10 - 12/24V).

PN	Description
500051725	Orange LED flashing / three screws fixing
500051726	Orange LED flashing / rod fixing flexible
500051727	Orange LED flashing / magnetic fixing base / spiral cable with integrated socket

Distinctive visibility



Compressed air horn

Complete with built-in solenoid valve 24V. Length: 19cm.

PN	Description
500025951	Compressed air horn

Compressed air horn with 2 tones

Complete with: spoiler, 24V solenoid valve and mount gasket. Length 50cm - 60cm.

PN	Description
500025949	Compressed air horn with 2 tones



Compressed air horn for articulated trucks

Complete with 24V solenoid valves and spoilers. Length: 55-60cm, powerful sound with high and low-tone horns.

PN	Description
500051880	Compressed air horn for articulated trucks



Pneumatic horn

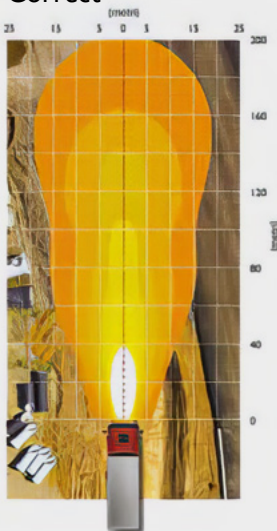
For use on vehicles without compressed air. Complete with: spoiler and 24V electropneumatic compressor.

PN	Description
2993750	Pneumatic horn

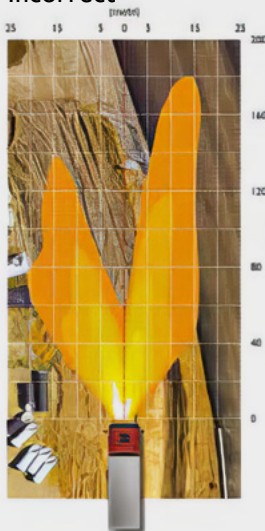


Off-road illumination

Correct



Incorrect



To ensure optimum visibility when working with your headlamps on, your headlamps need to be positioned correctly in order to provide an intense and precise source of luminous power – this is the only way to guarantee your comfort and safety while also taking the stress out of driving.

For the light installation check your local legislation.

Always safe & efficient

Increase your vehicle safety and help prevent collisions with a complete rear camera system. Ensure your vehicle performances and your own peace of mind: high performances thanks to fuel anti-theft tools, monitoring tyre pressure and aerodynamic kit.





Rear cameras

Fuel anti-theft systems

Tyre pressure monitoring systems



Rear view kit, 5.6" Screen

The kit contains:

- Professional waterproof built-in camera IP69K, with a viewing angle of 120°
- TFT LCD 5.6" colour monitor, 4:3 format, with 2 additional camera inputs, 12/24V, cable 18m

PN	Description
500050706	Rear view kit, 5.6" screen

Rear view kit, 7" screen

The kit contains:

- Professional waterproof built-in camera IP69K, with a viewing angle of 120°
- TFT LCD 7" colour monitor, 16:9 format, with 2 additional camera inputs, 12/24V, cable 18m

PN	Description
500050705	Rear view kit, 7" screen

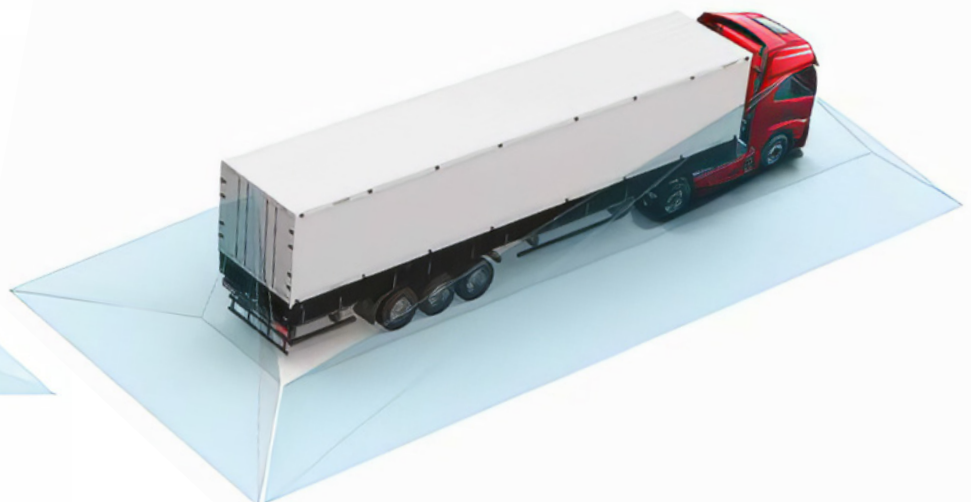
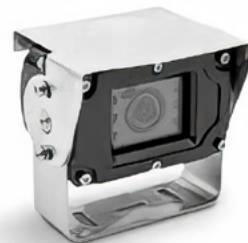


Front/rear view kit, 5.6" Screen

The kit contains:

- Professional waterproof built-in camera IP69K, with a viewing angle of 120°
- TFT LCD 5.6" colour monitor, 4:3 format, with 2 additional camera inputs, 12/24V
- Colour micro camera with prism lenses to allow frontal viewing with an angle of 30°, cable 18m

PN	Description
500050707	Front/Rear view kit, 5.6" screen



Always safe & efficient

Tyre pressure monitoring system

The TPMS ensures that the temperature and pressure status of the tyres are always under control.

The kit contains:

- 6 valve-cap sensors
- Display L56 x W118 x H20mm
- 1 repeater
- 7 dustproof covers

Characteristics:

- Pressure range: 0-12Bar / 0-174PSI
- Visual and audible warning
- Self-testing for each power-on
- Intelligent sleeping mode for power saving

PN	Description
500051793	Tyre pressure monitoring system



Heated rear camera

The kit contains:

- Professional heated and waterproof camera IP69K, with a viewing angle of 170°. Automatic activation for fog and defrost modes
- Plug and play connectors, cables

PN	Description
500051896	Heated rear camera



Emergency and first aid kit

The kit contains:

- Black clutch bag with IVECO screen printing
- Hi-vis vest
- Compact Euro micro triangle
- Dynamo torch
- First aid kit certified DIN13164
- Breaker hammer
- Gloves
- Ice-scraper

PN	Description
500049939	Emergency and first aid kit

Ladder holder

Made of stainless steel, you can easily load and unload your ladder with the utmost speed and safety.

PN	Description
500051895	Ladder holder



Fuel security and safety device

The fuel security devices are proven to resolve any haulier fuel security issues, protecting your fuel.

PN	Description
500050869	Tank safe impregnable aluminium
500050870	Tank safe standard aluminium
500050871	Tank safe standard aluminium for rigid bodies



Caps with keys

For protecting the fuel and urea in the tank.

PN	Description
500050986	Bayonet fitting fuel cap 2-lug 60mm
500050987	Bayonet fitting urea cap 2-lug 60mm



Anti-theft nuts

Material: Alkaline zinc plated.

The kit contains:

PN	Description
500025710	Anti-theft nuts M22 x 1.5mm



Tool boxes

Made of polished, matte or oval-embossed stainless steel, the boxes have plastic Europlex latches. They fit perfectly in the most diverse types of vehicles thanks to the wide choice of customisations.

PN	Description
500050577	Thermoplastic case 400 x 350 x 400mm
500050578	Thermoplastic case 500 x 350 x 400mm
500050579	Thermoplastic case 600 x 450 x 470mm
500050580	Thermoplastic case 700 x 450 x 470mm
500050581	Thermoplastic case 800 x 450 x 470mm
500050582	Thermoplastic case 1000 x 500 x 470mm
500050583	Thermoplastic case 1000 x 500 x 650mm



PN	Description
500050200	Matte stainless steel box 500 x 350 x 400mm 1.2mm thick
500050201	Matte stainless steel box 600 x 400 x 470mm 1.2mm thick
500050202	Matte stainless steel box 500 x 350 x 400mm 1.5mm thick



PN	Description
500050204	Oval-embossed stainless steel hand washing can - 285 x 245 x 400mm 1mm thick - 25L

PN	Description
500050205	Oval-embossed stainless steel hand washing can - 170 x 370 x 400mm - 25L

PN	Description
500050206	Oval-embossed stainless box can - 10L

PN	Description
500050211	Polished stainless box 800 x 500 x 500mm
500050212	Polished stainless box 1000 x 500 x 500mm
500050215	Brackets for all INOX boxes range



PN	Description
500050213	Oval-embossed stainless box 800 x 500 x 500mm
500050214	Oval-embossed stainless box 1000 x 500 x 500mm



Door window deflectors

PN	Description
500051767	Deflectors - set of 2 pieces (for right and left windows)

Aerodynamic kit high roof

PN	Description
5802485544	Adjustable roof spoiler
5802485510	Lower right side spoiler
5802485491	Lower left side spoiler
5802485477	Upper left side spoiler
5802485466	Upper right side spoiler
500051897	Mounting kit



Always safe & efficient



A world of technology and connectivity

Connectivity on the new IVECO S-WAY has been designed to help the driver operate effortlessly and efficiently, and to support the fleet manager by optimising the vehicle's uptime, fuel efficiency and Total Cost of Ownership.

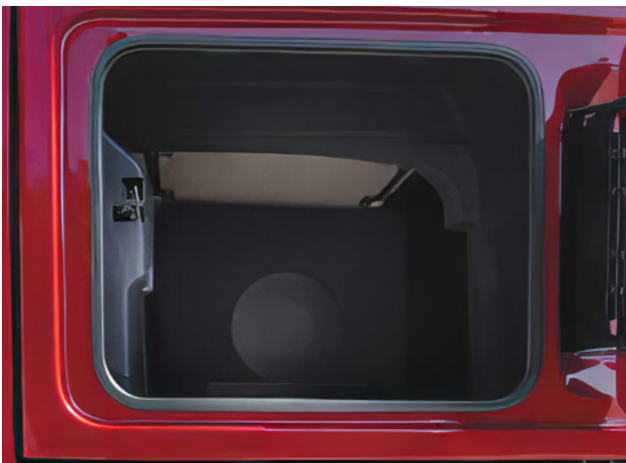




Hi-Vision 2.0

Matching the new audio & video system guarantees innovation, technology and ease of use, creating the ideal environment for relaxation time.

PN	Description
500051888	Monitor 24", USB and HDMI socket, antenna, plug and play cables and mounting kit.



Hi-Sound 24 V 2.0

Matching the new audio & video system guarantees innovation, technology and ease of use, creating the ideal environment for relaxation time.

PN	Description
500051878	1 subwoofer, plug and play cables, amplifier, fixing bracket



Smartphone support

Tailor-made dashboard bracket with USB socket to recharge your smartphone, tablet or TomTom™ which can be easily and safely positioned in the dedicated holder.

Opt. 72945: Connectivity Box + cradle predisposition (Mobile/Tablet/Driver Linc)

PN	Description
500051786	Smartphone cradle, tablet holder, TomTom™ (drivelinc) holder with USB socket integrated in the bracket
500051899	Qi Cradle for Smartphone to recharge inductively your device

Living comfort

Microwave

USB LED Reading light

Premium seat covers

Mats

Coffee machine





Microwave oven

A 24V microwave oven with intuitive and robust design integrated ceramic plate, easy to clean interior, LED light. Check OPT predisposition on vehicle configurator.

PN	Description
500051789	Microwave oven
500049985	Microwave mounting kit

USB LED reading light

PN	Description
500051762	LED courtesy reading light for USB socket



Air blower

Air blower kit for cab interior with an innovative and ergonomic design.

PN	Description
500036271	Air blower

Living comfort

Coffee machine

PN	Description
500049941	New generation truck coffee machine for coffee pods. 140W, 24V.



Rubbish bin

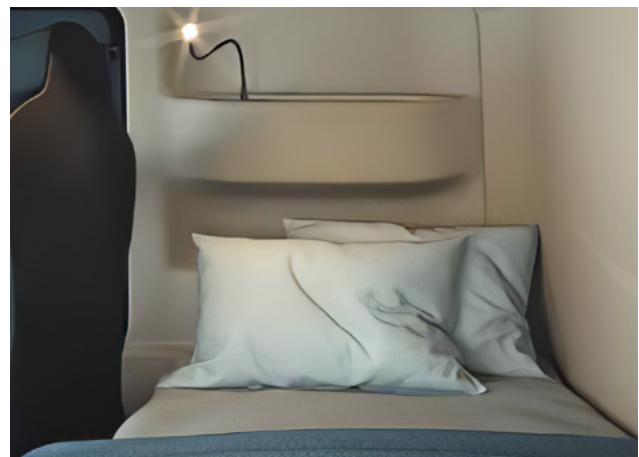
Ergonomic rubbish bin with branded metallic support to be hung to the fridge handle.

PN	Description
500051898	Rubbish can

Sleeping set*

PN	Description
500049930	Ergonomic topper in light memory foam
500049929	Cover topper

*Pillows are not included



Seat covers

The lines of seat covers are designed to meet all needs and have a working environment tailored to your personal needs.

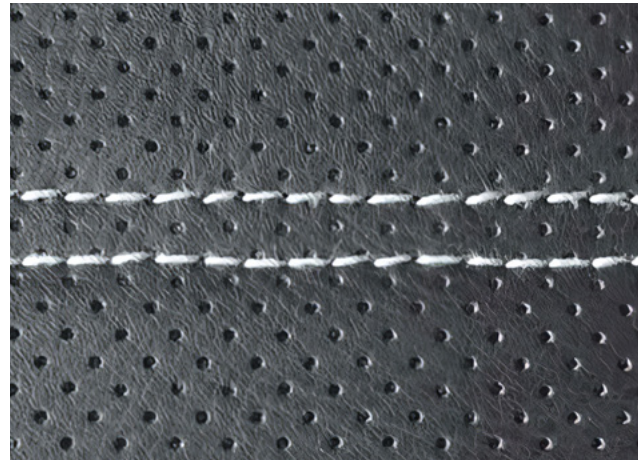


Living comfort

Sky-High Line

Black faux leather with micro-perforated banded backrest and customised with IVECO embroidered logo.

PN	Description
500049964	Driver's seat standard
500049965	Driver's Hi-comfort seat
500049966	Passenger seat



Active Line

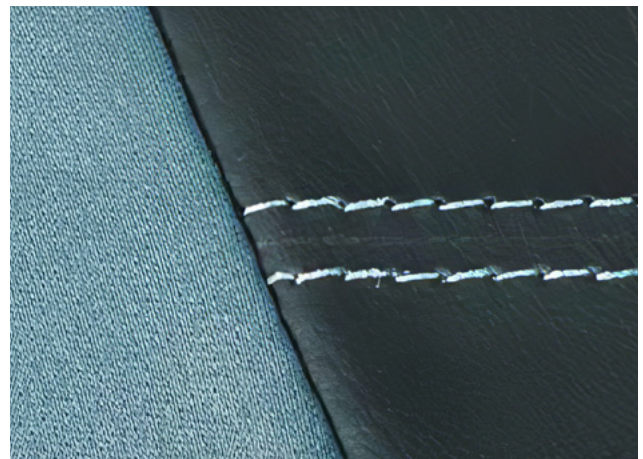
Black Tecnosilk fabric, electro-welded centre panel with diamond pattern insert, top seat faux leather with IVECO embroidered logo.

PN	Description
500049958	Driver's seat standard
500049959	Driver's Hi-comfort seat
500049960	Passenger seat

Everlasting Line

Tech. Black fabric, side plush anthracite faux leather, backrest in jersey, top seat in grey jersey customised with IVECO embroidered logo.

PN	Description
500049961	Driver's seat standard
500049962	Driver's Hi-comfort seat
500049963	Passenger seat



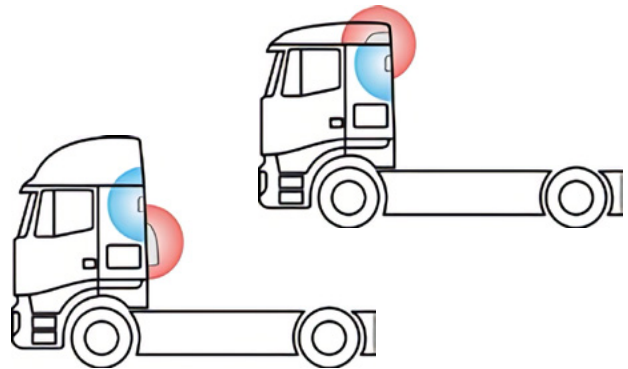


External parking cooler

The stationary vehicle air conditioning achieves the maximum thermal comfort. It works silently and cleanly with the engine off, lowering the temperature and reducing humidity in the way that only true air conditioners can, leaving the roof hatch free.

PN	Description
500025707	Fresco Top
500025706	Fresco Back

Fresco Top: installable above cab. Not compatible with S-WAY AS fitted with aerodynamic kit



Truck care kit

Cosmetic detergents for cleaning your vehicle. Professional line, technological formulation. The kit contains:

- Shining Body 250ml to clean windows, dashboard, steering wheel
- Perfect Interior 250ml to clean seat cover fabric and mats
- Clean Air Perfume 250ml to sanitise air
- Back to Black Tyre spray 250ml
- Black nitrile gloves
- Microfibre cloth
- 2 white cotton grips



PN	Description
500049933	Truck care kit

Living comfort

Fabric mats

Developed to match the new flooring, they are customised with a woven IVECO logo. Double-fixing system helps them stay in place to avoid potentially hazardous situations.



Everlasting Line

Active Line

Sky-High Line

Sky-High Line

In velour Twist tufted dark grey fabric, anthracite-colour nubuck edging and lead colour stitching. Silver IVECO logo and red steering wheel logo stitched and gel backing.

PN	Description
500049954	Front floor mat kit
500049915	Mat zone night for automatic gearbox

Active Line

In velour Magnum tufted dark grey fabric, anthracite-colour nubuck edging and lead colour stitching Black IVECO logo and red steering wheel logo stitched and granular backing.

PN	Description
500049952	Front floor mat kit
500049913	Mat zone night for automatic gearbox

Everlasting Line

In Endurance grey fabric, black fabric edging, red steering wheel logo stitched and granular backing.

PN	Description
500049951	Front floor mat kit

